



## Bestune NAT 2023 PRO Enjoyable Travel Battery Swap Edition FAW Bestune Compact MPV Pure Electric 163 HP

Our Product Introduction

for more products please visit us on petrolhybridcars.com

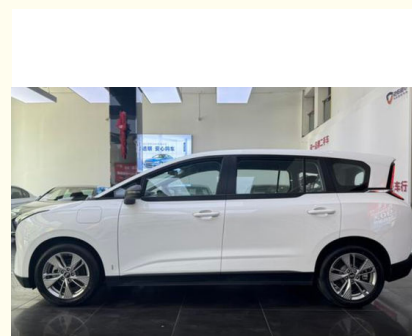
### Basic Information

- Place of Origin: China
- Brand Name: Bestune NAT
- Model Number: Bestune NAT
- Minimum Order Quantity: discussible
- Delivery Time: 5-8 word days
- Payment Terms: T/T

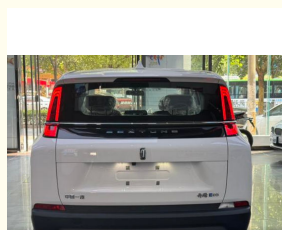
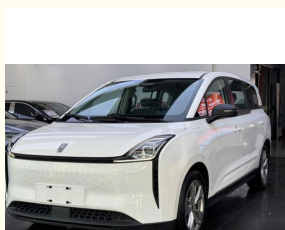


### Product Specification

- Energy Type: Pure Electric
- Maximum Power: 120(163Ps)
- Length \* Width \* Height: 4450x1840x1680
- Product Category: MPV
- Body Structure: 5 Door 5 Seat MPV
- Drive Model: Front Front Drive
- Highlight: **FAW Bestune NAT 2023, Enjoyable Travel Bestune NAT, Pure Electric 163 HP Bestune NAT**



### More Images



### Product Description:

#### Used Bestune NAT

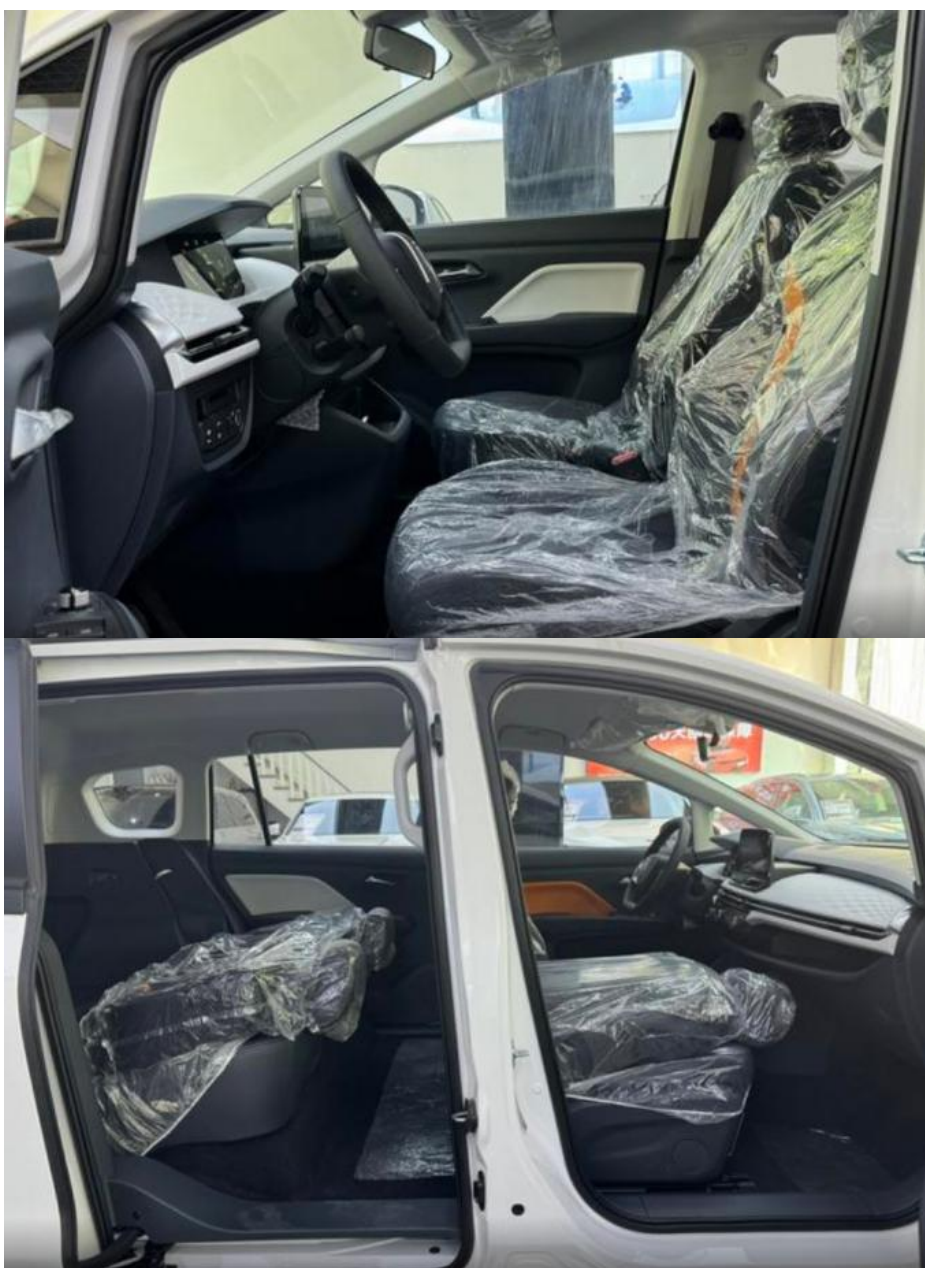
Looking for a modern, eco-friendly, and highly efficient electric vehicle? Check out this 2023 Bestune NAT PRO Yuexiang Battery Swap Edition, designed specifically for urban travel and ride-hailing services. It combines functionality with cutting-edge technology to meet the needs of both individual drivers and professional mobility platforms.

This model features a battery swap system, ensuring downtime is kept to a minimum. Simply exchange the depleted battery at swap stations, and you're back on the road within minutes—no more waiting for charging! The NAT PRO also boasts a long range, optimized for urban commutes, and enhanced power efficiency to help you meet daily travel demands comfortably.

Inside, it offers a spacious and well-designed cabin, accommodating up to 5 passengers with generous legroom. The tech-enhanced interior includes a large touchscreen display with smart connectivity for navigation and entertainment. Its advanced driver assistance systems (ADAS) provide safety features like collision warnings and automatic braking, making every journey safe and smooth.

This Bestune model is known for low operating costs, making it an excellent investment for ride-hailing businesses or individuals seeking a reliable electric car. With sleek exterior styling, the NAT PRO blends practicality with elegance, appealing to both drivers and passengers.

If you're in the market for a vehicle that prioritizes sustainability, convenience, and performance, the 2023 Bestune NAT PRO Yuexiang Battery Swap Edition is an ideal choice. Don't miss this opportunity—contact me today for more details or to schedule a test drive!





**Features:**

- Product Name: Used Bestune NAT
- Safety:
  - Comprehensive safety airbag system for passenger protection
  - Advanced safety technologies including ABS (Anti-lock Braking System), Electronic Stability Control, etc., for stable driving and braking performance
  - Reverse camera and parking assistance system for convenient parking operations

**Technical Parameters:**

Maximum Speed:	140
Length * Width * Height:	4450x1840x1680
Engine	
Energy Type:	Electric
Body Structure:	5 Door 5 Seat MPV
Maximum Torque:	155
Powertrain:	Electric
Exterior Design:	The interior design is exquisite and practical, using high-quality materials and comfortable to the touch. The seats are ergonomic and provide excellent support and ride comfort. The interior is richly equipped with features such as a large center screen and an intelligent connectivity system to make your drive more convenient and enjoyable.
Product Name:	Bestune NAT

**Applications:**

- The stylish and dynamic appearance and smooth lines outline a charming figure, making you the focus of the street.
- The interior space is spacious and comfortable, flexible and changeable to meet your diverse needs.
- Efficient power, economical and fuel-efficient, saving costs for your travel.

Rich and practical configurations, enjoy a convenient driving experience.  
Excellent safety performance, escorting every trip for you.

### Support and Services:

- 24/7 technical support hotline for any questions or concerns
- On-site technical support for major issues
- Regular software updates to improve performance and add new features
- Access to Toyota's network of certified service centers for maintenance and repairs
- Warranty coverage for the vehicle and battery

Our technical support and services team is dedicated to providing prompt and effective solutions to any issues that customers may encounter. We strive to make sure that our customers have a worry-free ownership experience with their Car.

### Packing and Shipping:

Product Packaging:

Used Bestune NAT

Warranty Information

User Manual

Shipping Information:

Product will be shipped within 5-7 business days of order confirmation.

Shipping fees will be calculated during checkout.

Shipping available to most locations worldwide.

Tracking information will be provided once the product has been shipped.

### FAQ:

**Q: What is the brand name of the car?**

A: The brand name is Bestune NAT .

**Q: Where is the full electric car manufactured?**

A: The car is manufactured in China.

**Q: What is the minimum order quantity for the full electric car?**

A: The minimum order quantity is discussible. Please contact us for more information.

**Q: What are the payment terms for the full electric car?**

A: The payment terms are T/T.

**Q: What is the delivery time for the full electric car?**

A: The delivery time is 5-8 word days.



**Shaanxi Xianghelixin Automobile Sales Service Co., Ltd.**



18702965875



xunqin419@gmail.com



petrolhybridcars.com

Room 2307, Shanxi Securities Building, No.2 Gaoxin Road, Lianhu District, Xi 'an City, Shaanxi Province